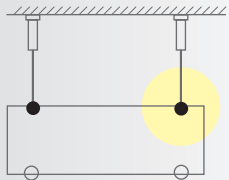
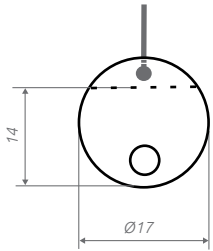


oh17.s
Ceiling mounting for hanging signs

iNOX
rope assembly
sign

It is possible to accommodate a 1 mm wire cable with a sphere at the end.
To fixate signs up to 6 mm thickness.



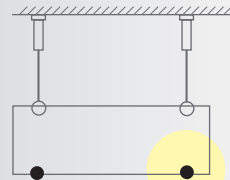
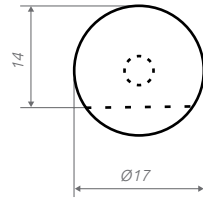
Ø non
 6 mm

ioh17.s.6

ov17
Glass connector to clamp

iNOX
rope assembly
sign

Glass connector to clamp two 3 mm thick plates.



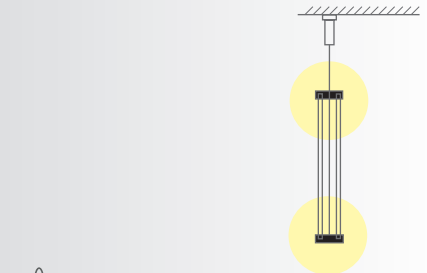
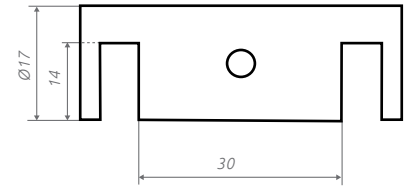
Ø non
 6 mm

iov17.6

ob17.s
Ceiling mounting double-sided

iNOX
rope assembly
sign

It is possible to accommodate 1,5 mm wire cables at the top and bottom, as well as 6 mm thick signs with a clearance of 30 mm, to avoid the possibility to see through it.



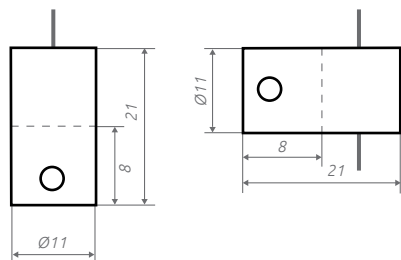
Ø non
 6 mm

iob17.s

se.s
Rope assembly of 6mm

INOX
rope assembly
sign

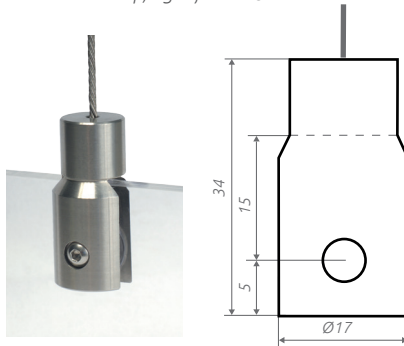
Sign holder, which can accommodate signs up to 6 mm thick at the top. These signs are hung, without drilling, on a wire cable with a diameter of 1,5 mm.



h1.s
Can intake signs at one sides

INOX
rope assembly
sign

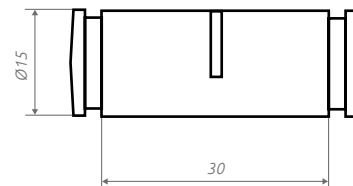
The sign holder can accommodate 1,5 mm wire cables at the top; signs from 1-8 mm thickness



hb.s
Can intake signs at both sides

INOX
rope assembly
sign

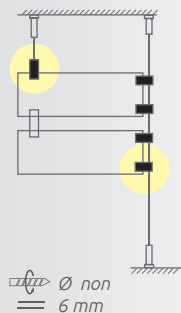
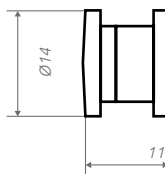
The sign holder can accommodate 1,5 mm wire cables, at the top and bottom, as well as double sided 2-10 mm thick signs with a clearance of 30 mm, to avoid the possibility of see through it.



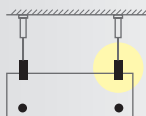
v14
Sign connector

INOX
rope assembly
sign

To connect two signs which have a thickness between 5 and 10 mm.



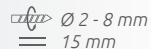
ise.s



iv14.5-10



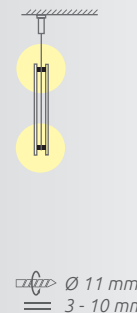
iv14.5-10go



ih1.s.2-8



ih1.s.2-8go



ihb.s.3-10